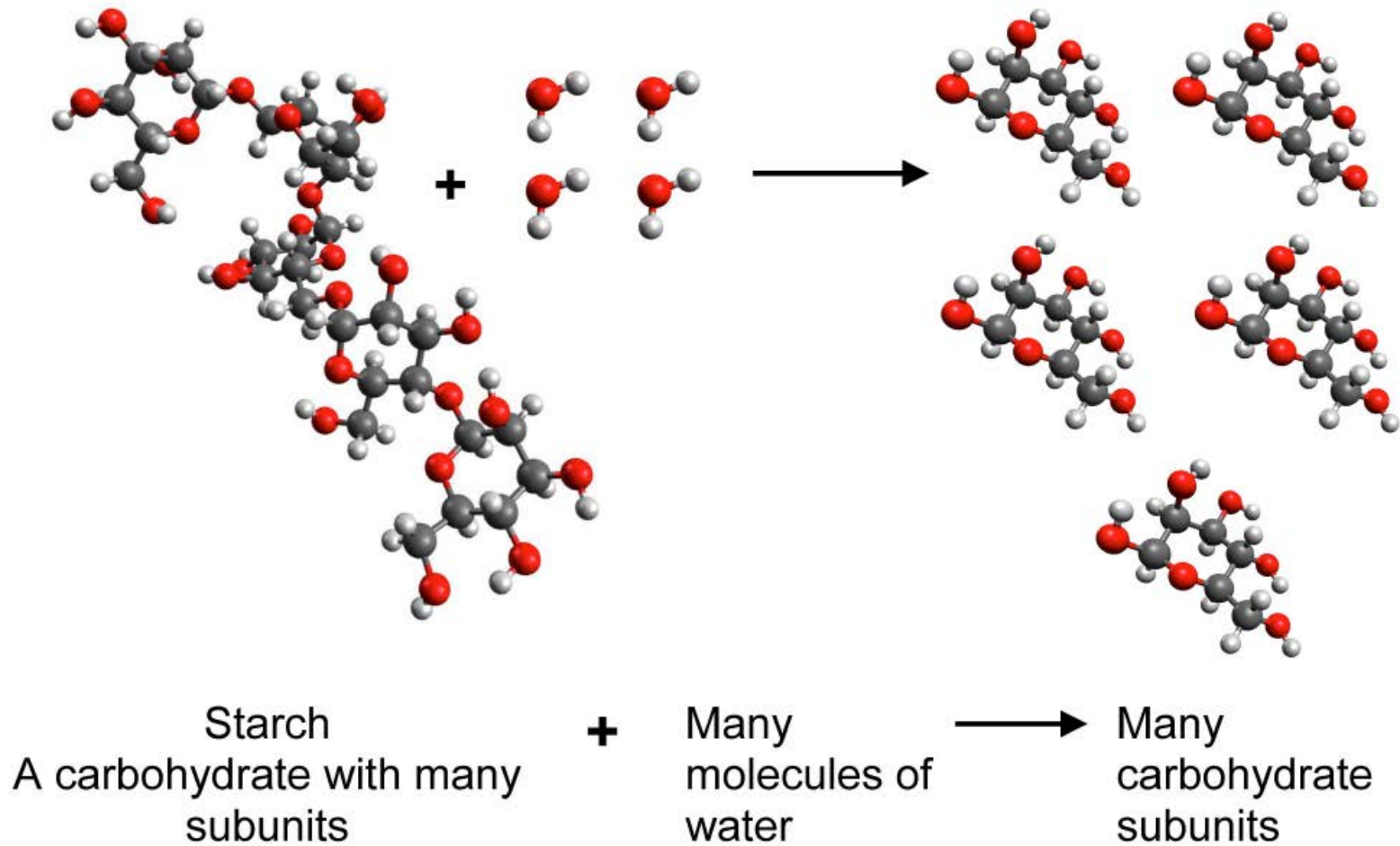


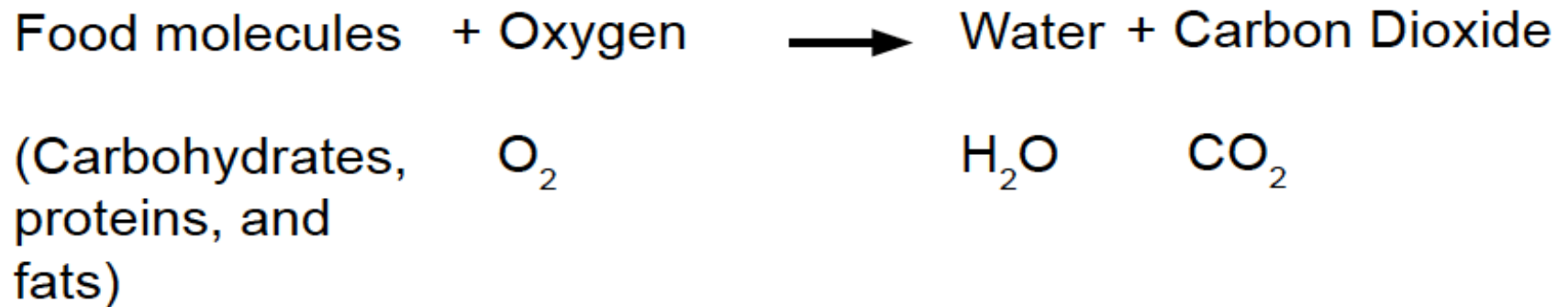
## PI: Starch Breaks Down

Starch reacts with water to break down into subunits.



## PI: Burning Food Molecules

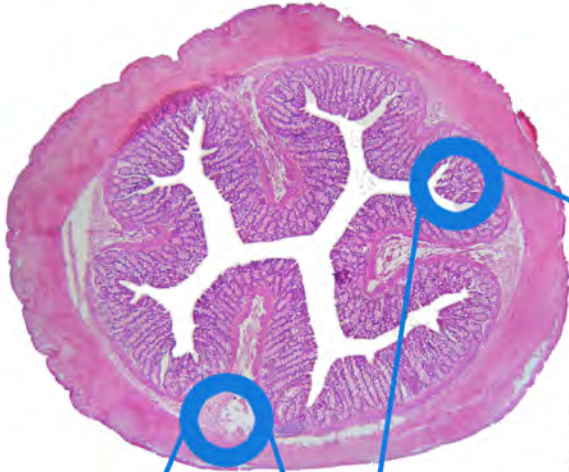
# Burning Food Molecules



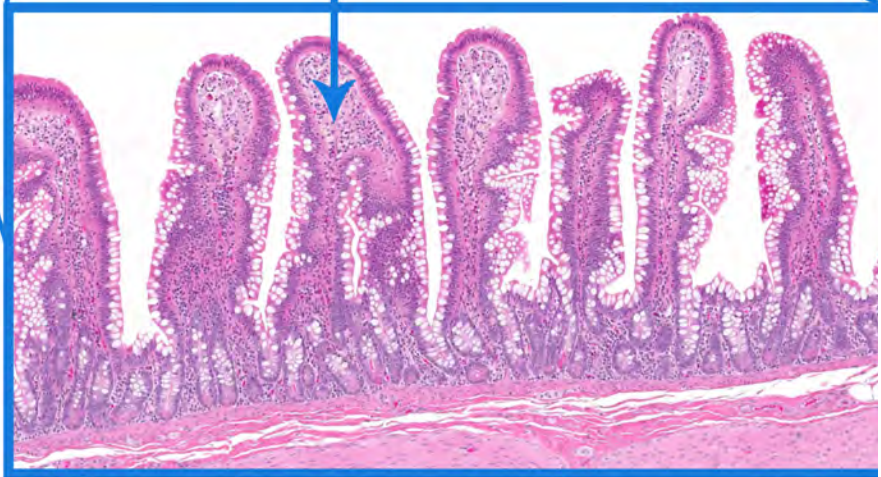
# IQWST Chemistry

## PI: Capillaries and Small Intestines

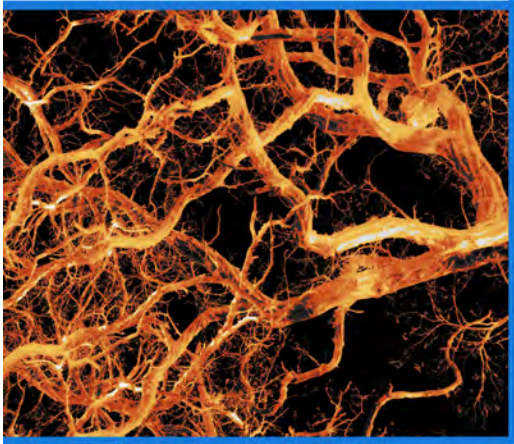
### Villi in the Small Intestine



Capillary Network  
in Villus Core

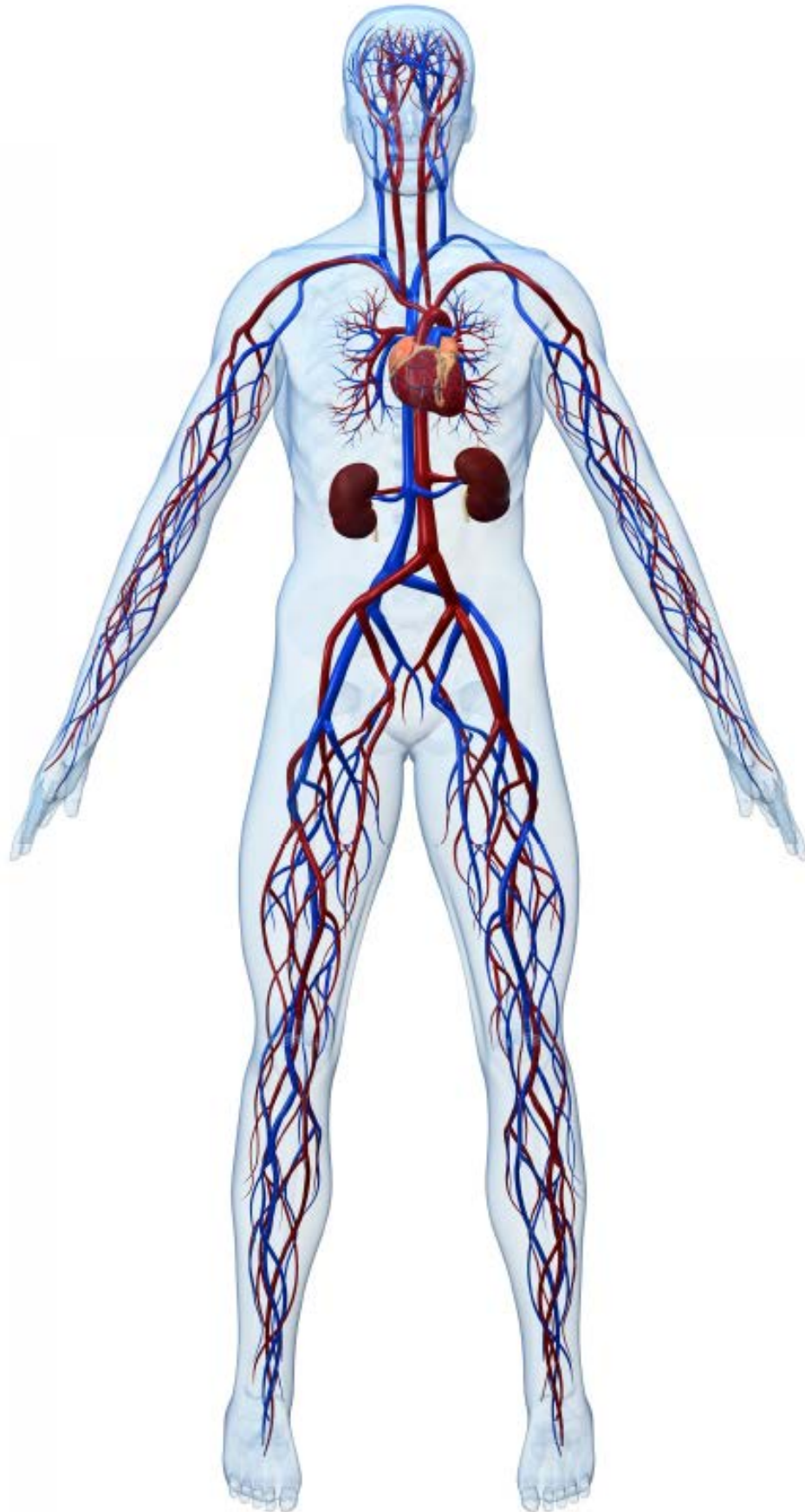


Villus Cores



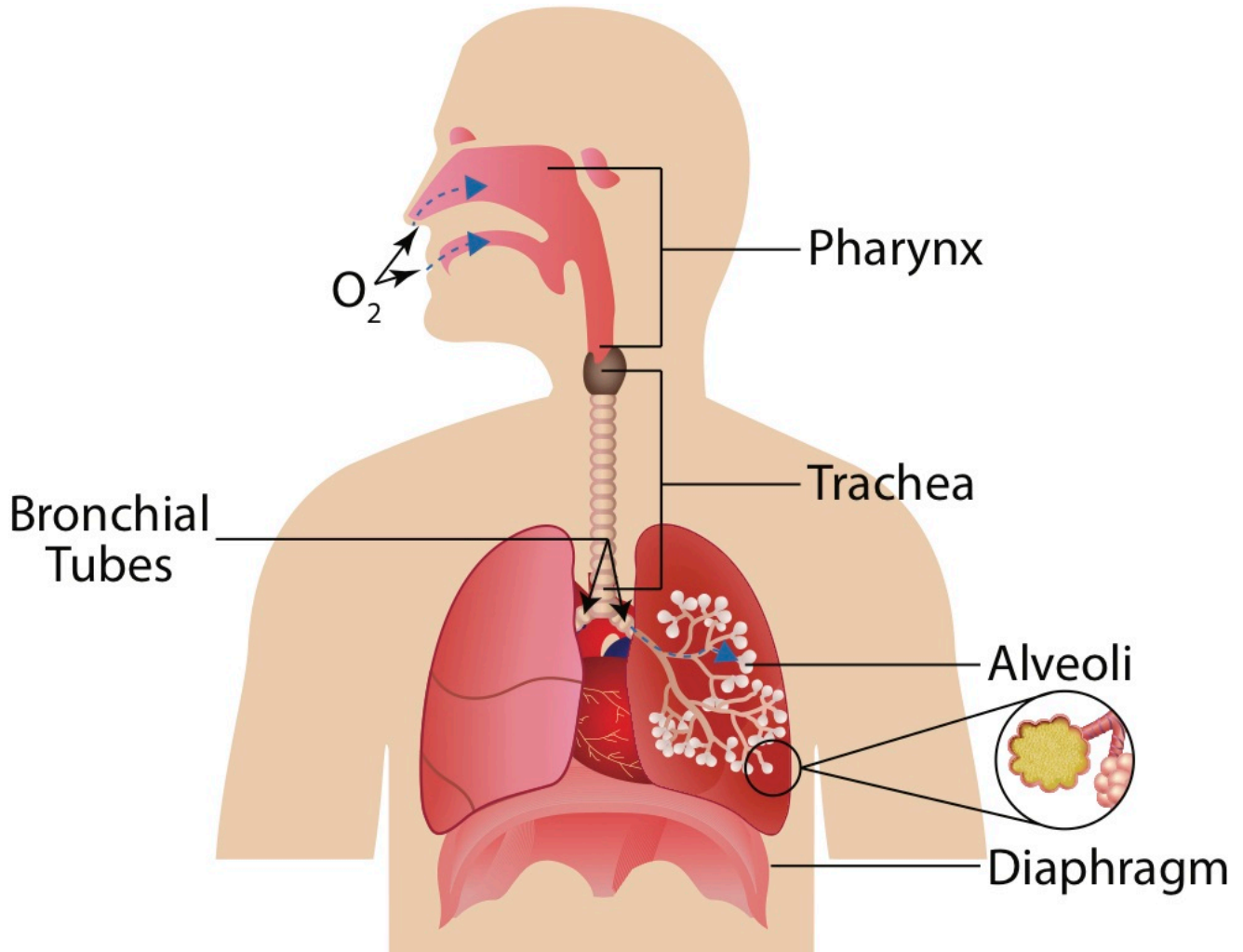
Capillary Bed

**IQWST Chemistry**  
**PI: Circulatory System**

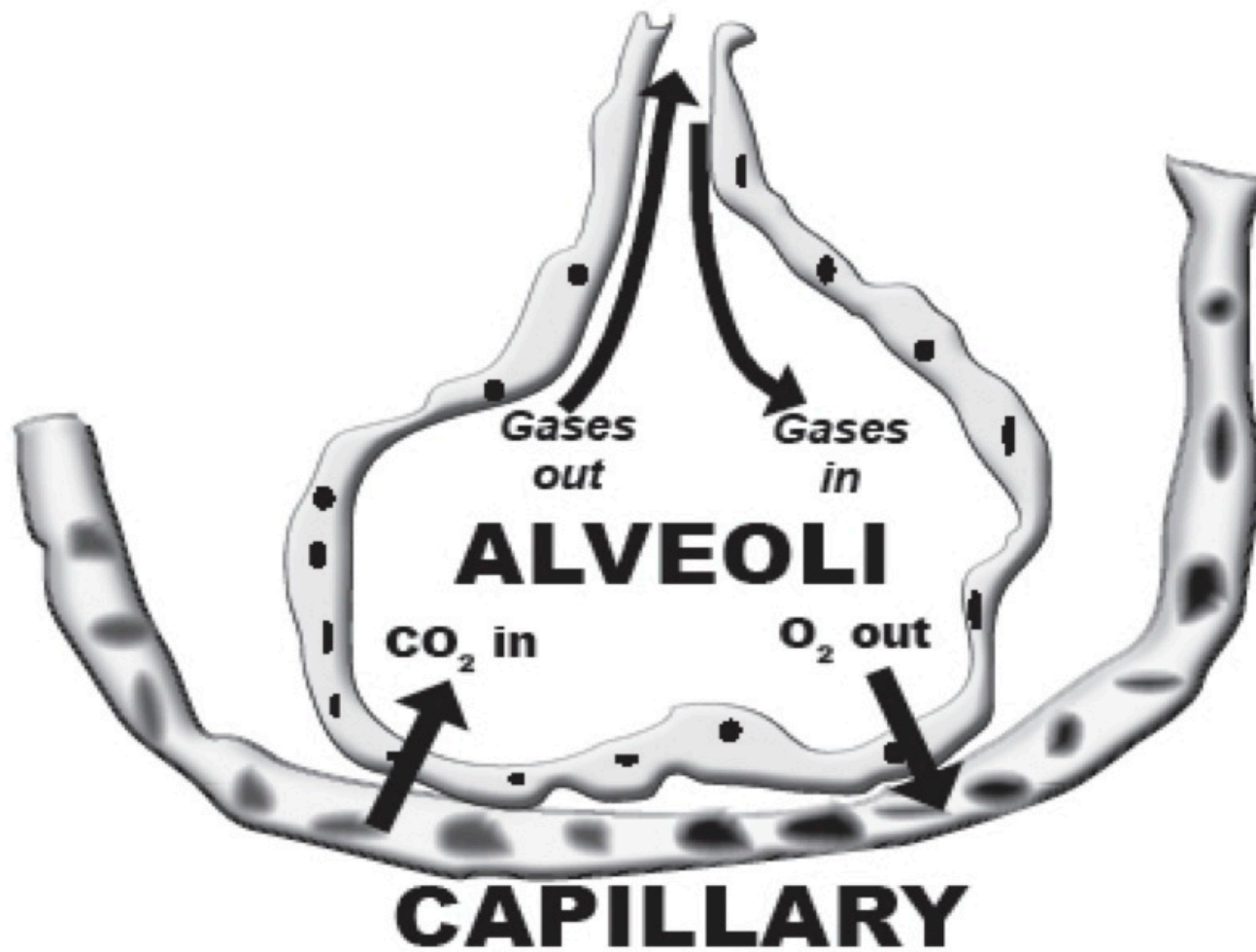


# IQWST Chemistry

## PI: Respiratory System

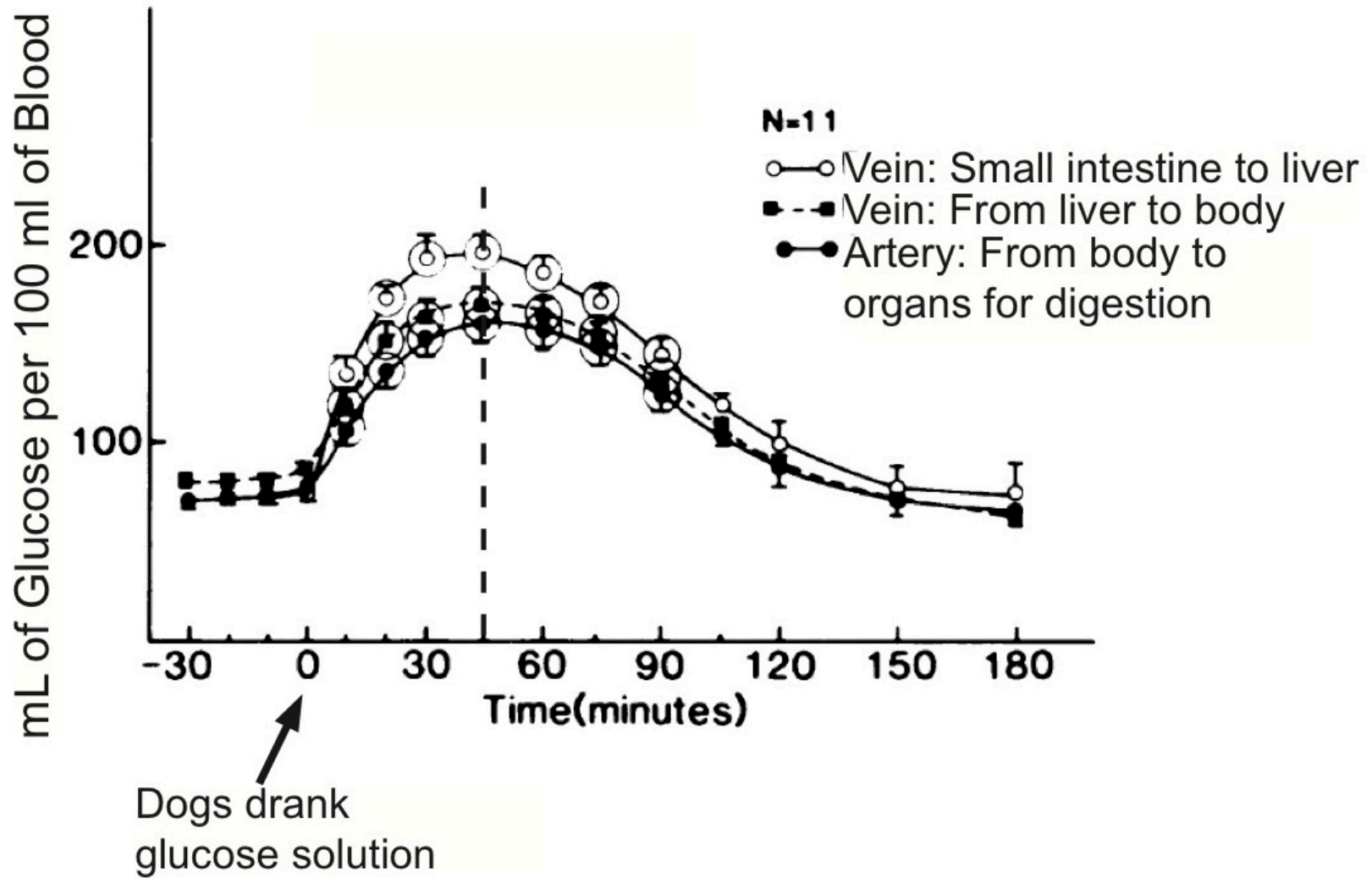


**IQWST Chemistry**  
**PI: Gas Exchange in the Alveoli**



# IQWST Chemistry

## PI: Glucose Levels in the Blood



IQWST Chemistry  
PI: Cellular Respiration

**CELLULAR RESPIRATION**

**The Chemical Reaction Organisms Use to Convert the Energy from Food Molecules**

